



Community survey

Why did we do the survey?

- to find out the actual needs of people in the community
- to build relationships with the people in the community



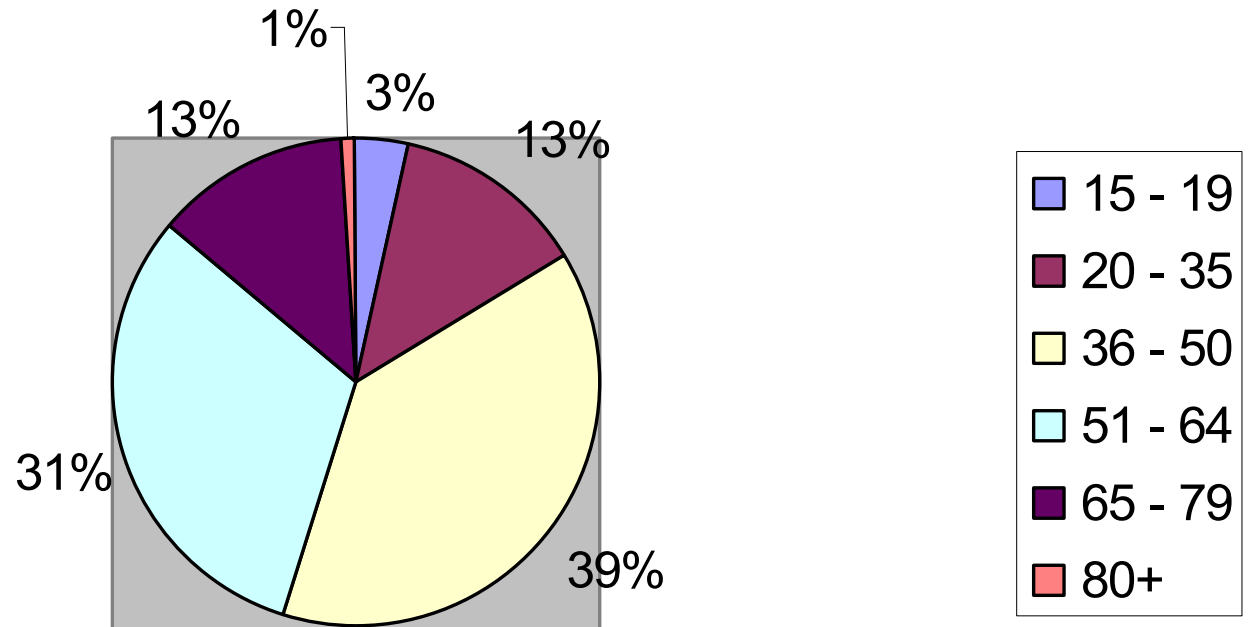
Community survey

The Scale of the Survey

- 112 surveys were completed
- About 5 % of households in Frimley Ward
- General election polls question less than 1% of the voting population to get a prediction

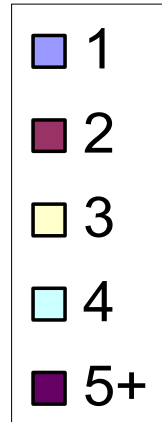
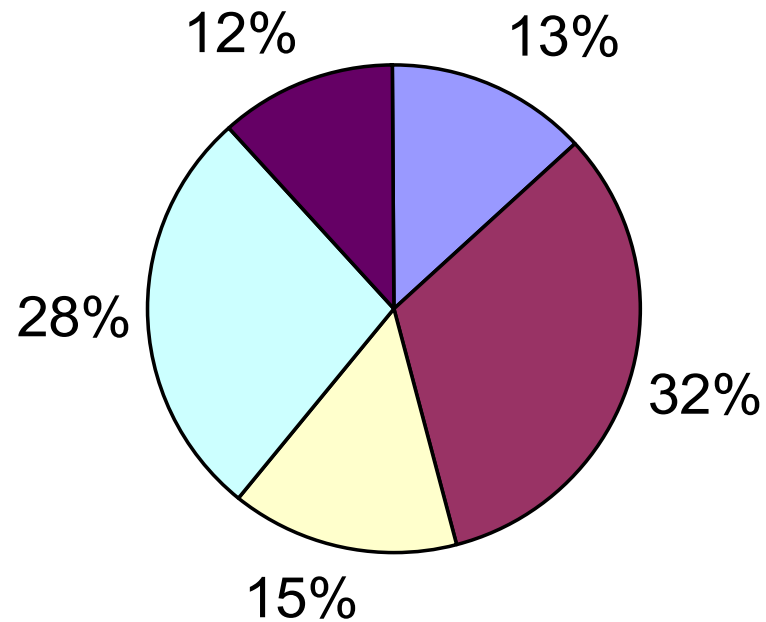
Community survey

Respondents by age group



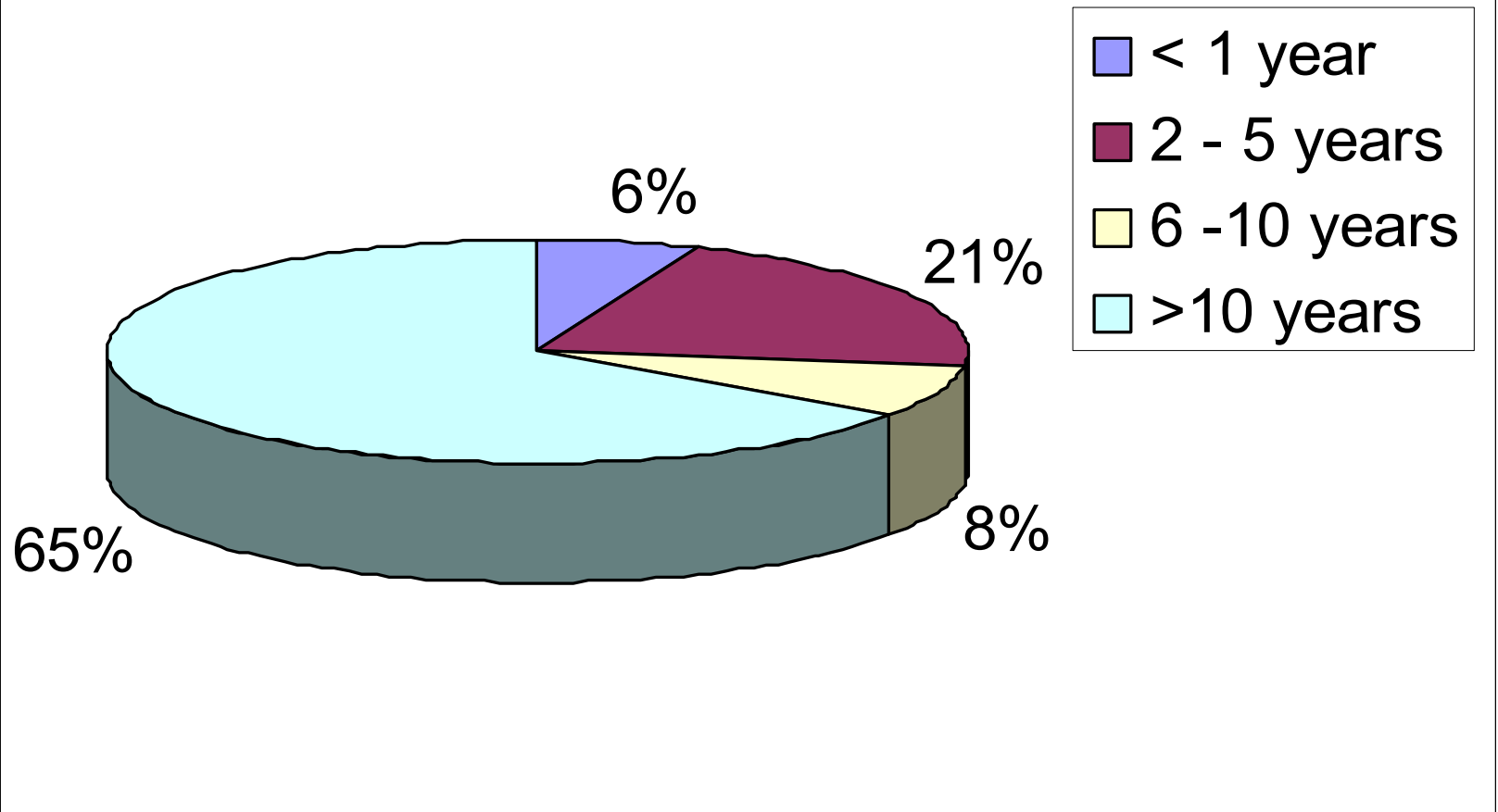
Community survey

Number in household



Community survey

Years lived in Frimley





Community survey

Are there any facilities/services lacking in this area that you think should be provided? No - 52% Yes - 48%

Most frequently mentioned facility lacking

- Something for youth (to keep them off the streets)
- Second most mentioned – a cinema

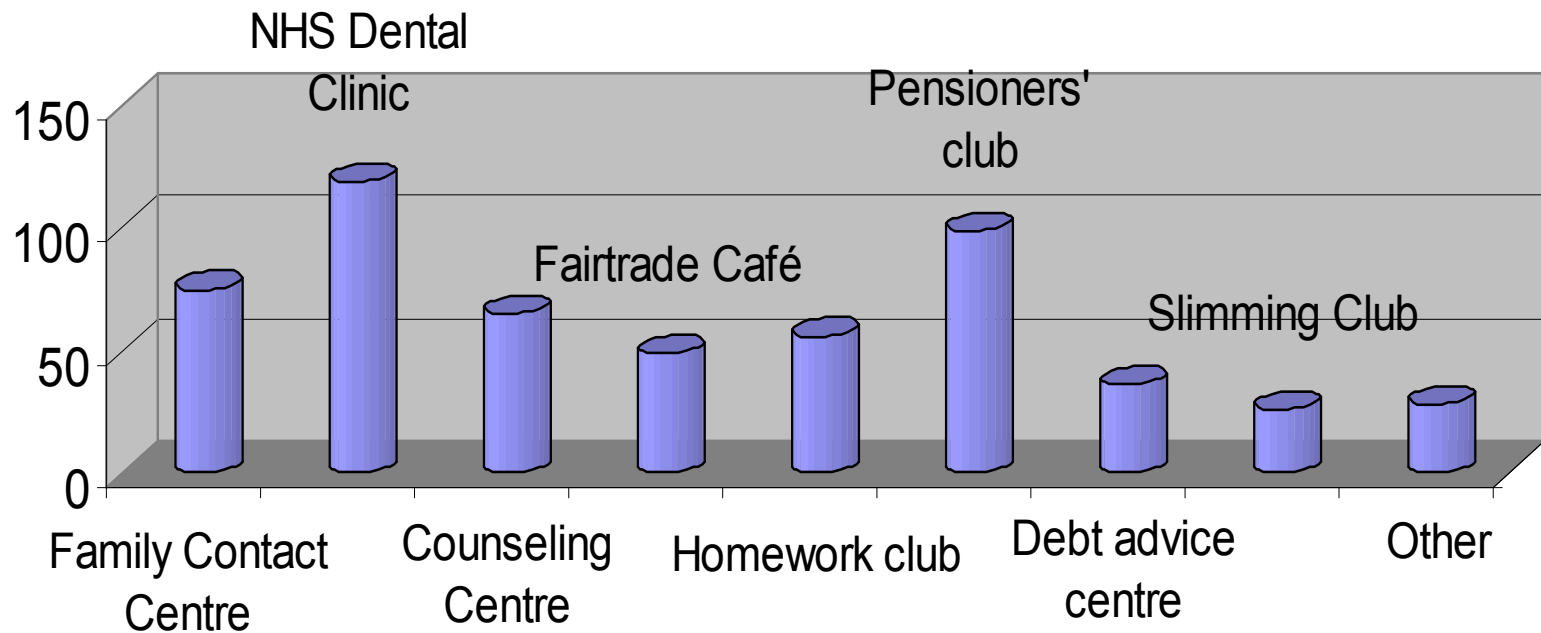


Community survey

- 11 (c. 10 %) households have someone with a disability
- Of these 4 have some need they do not feel is being met

Community survey

Most Valuable to the community if the church was to extend its buildings





Community survey

Clear winners

1. NHS Dental clinic
2. Pensioners club (but very few pensioners in survey households)
3. Most frequently mentioned “other” – something for youth



Community survey

Actions

- A new Youth and Schools Worker has been appointed.
- A new youth club will commence in Spring 2007 for School years 7 & 8 – look out for ‘Café Crunch’.
- We are not planning in the immediate future to provide an NHS Dentist, but given the strength of feeling, the results will be passed to the Local MP



Community survey

What next

- We are appointing a Parish Nurse with effect from Jan 2007 whose remit includes further analysis of the survey results, and consideration of whether further survey work is needed and what to do next.
- Thank you to all those who filled out the questionnaire on the doorstep or on-line